



The tailor-made enclosure

The proven PROFI CASE small case series is characterised by its timeless design and simple and functional construction.



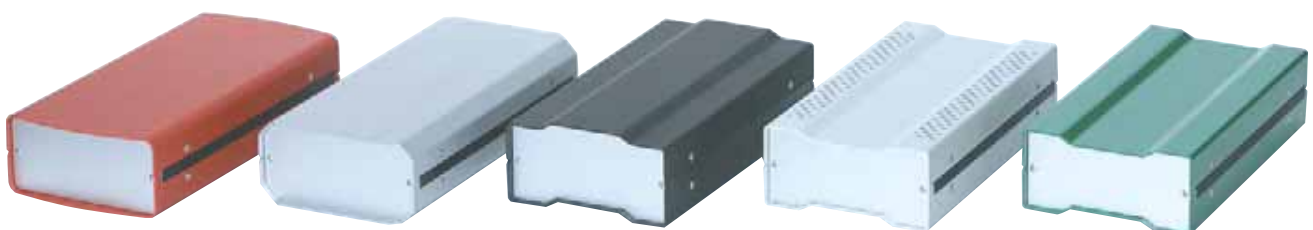
PROFI CASE



PROFI CASE small case

- simple construction
- short assembly time
- available with plastic side piece (series 415) or aluminium extrusion side piece (series 416)
- available as ventilated/partially ventilated or solid models
- special sizes available on request

Truly versatile . . .





Specifications

Application:

For 2 or 4 lab cards or customised electronic components

Construction:

Two aluminium half shells are attached with plastic side pieces (series 415) or aluminium extrusions (series 416) and screwed together from the outside of the case.

Integrated grooves (width: 2 mm) in the side pieces allow the installation of PCB's (thickness 1,6 mm) or mounting panels.

Finish:

Half shells, RAL 7035 light grey
Side parts, RAL 9005 deep black

Protection system:

IP 40: solid
IP 20: ventilated

Delivery:

not assembled

Included in delivery

Item	Pc.	Description
1	2	Top/bottom cover
2	2	Plastic side pieces (series 415, H=55 mm)
	4	Plastic side pieces (series 415, H=90 mm)
	2	Aluminium extrusion side pieces (series 416)
3	2	Side panels (series 415, H=90 mm)
4	4	Adhesive feet
5		Assembly material

Note:

Please order front panel/rear panel **6** and prop-up / carrying handle **7** separately.

Other colours and dimensions on request!

Order information

PROFI CASE 415 H = 55 mm

solid

one shell ventilated

both shells ventilated

PROFI CASE 415 H = 90 mm

solid

one shell ventilated


both shells ventilated


PROFI CASE 416 H = 55 mm


solid

one shell ventilated



PCB dimensions	Case height	Case depth	Usable depth	Case width	Usable width	Part no.			 6 Front panels / rear panels anodised RAL 7035	
						solid IP 40	One shell ventilated IP 20	Both shells ventilated IP 20		
mm	H mm	D mm	d mm	W mm	w mm					
100 x 160	55	175	160,5	115	101	415-303	415-323	415-343	415-103	415-123
120 x 160	55	175	160,5	135	121	415-305	415-325	415-345	415-105	415-125
160 x 160	55	175	160,5	175	161	415-302	415-322	415-342	415-102	415-122
190 x 160	55	175	160,5	205	191	415-301	415-321	415-341	415-101	415-121
233,35 x 160	55	175	160,5	248,5	234,5	415-304	415-324	415-344	415-104	415-124
100 x 210	55	225	210,5	115	101	415-003	415-023	415-043	415-103	415-123
160 x 210	55	225	210,5	175	161	415-002	415-022	415-042	415-102	415-122
190 x 210	55	225	210,5	205	191	415-001	415-021	415-041	415-101	415-121
233,35 x 210	55	225	210,5	248,5	234,5	415-004	415-024	415-044	415-104	415-124

PCB dimensions	Case height	Case depth	Usable depth	Case width	Usable width	Part no.			 6 Front panels / rear panels anodised RAL 7035	
						solid IP 40	One shell ventilated IP 20	Both shells ventilated IP 20		
mm	H mm	D mm	d mm	W mm	w mm					
100 x 160	90	175	160,5	115	101	415-313	415-333	415-353	415-113	415-133
120 x 160	90	175	160,5	135	121	415-315	415-335	415-355	415-115	415-135
160 x 160	90	175	160,5	175	161	415-312	415-332	415-352	415-112	415-132
190 x 160	90	175	160,5	205	191	415-311	415-331	415-351	415-111	415-131
233,35 x 160	90	175	160,5	248,5	234,5	415-314	415-334	415-354	415-114	415-134
100 x 210	90	225	210,5	115	101	415-013	415-033	415-053	415-113	415-133
160 x 210	90	225	210,5	175	161	415-012	415-032	415-052	415-112	415-132
190 x 210	90	225	210,5	205	191	415-011	415-031	415-051	415-111	415-131
233,35 x 210	90	225	210,5	248,5	234,5	415-014	415-034	415-054	415-114	415-134

PCB dimensions	Case height	Case depth	Usable depth	Case width	Usable width	Part no.		 6 Front panels / rear panels anodised RAL 7035	
						solid IP 40	One shell ventilated IP 20		
mm	H mm	D mm	d mm	W mm	w mm				
100 x 160	55	175	160,5	115	101	416-303	416-323	415-103	415-123
160 x 160	55	175	160,5	175	161	416-302	416-322	415-102	415-122
190 x 160	55	175	160,5	205	191	416-301	416-321	415-101	415-121
100 x 210	55	225	210,5	115	101	416-003	416-023	415-103	415-123
160 x 210	55	225	210,5	175	161	416-002	416-022	415-102	415-122
190 x 210	55	225	210,5	205	191	416-001	416-021	415-101	415-121



Accessories

7 Prop-up and carrying handle



- consists of handle brackets and a handle piece which can be cut to the appropriate length
- handle can be set 30° by pressing a button to snap it into place
- attached by a single hole on both sides

Material:

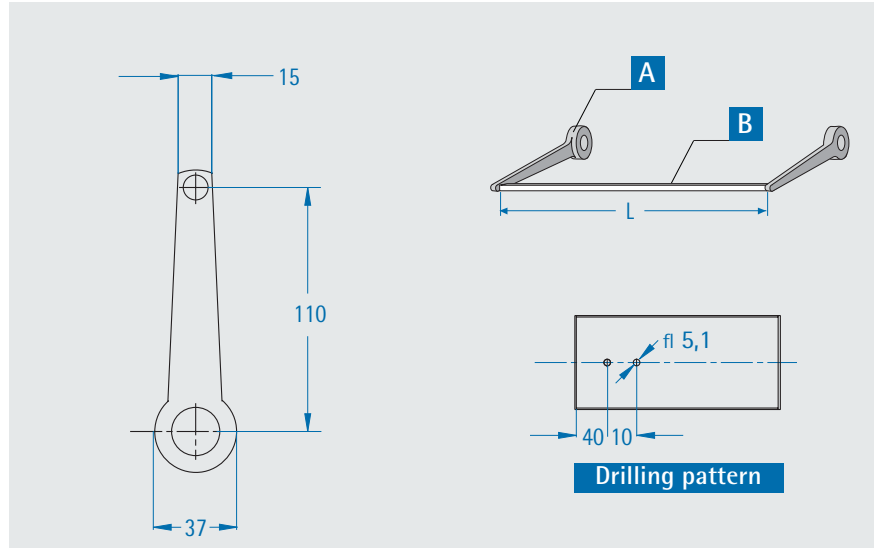
Handle extrusion: anodised aluminium
Handle brackets: black polyamide

Load capacity:

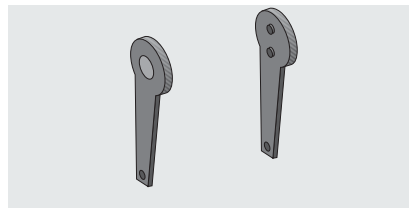
25kg

Determine the length of the handle section you need using the following formula:

Handle section length (L) = case width (W) + 16mm

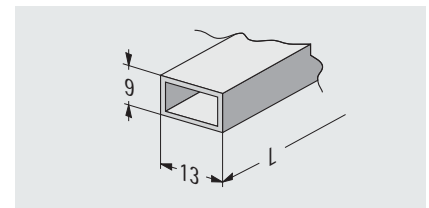


A Handle brackets



Part no. (pair)
615-060

B Handle section



- 1m piece to cut to appropriate length

Part no. (1 m)
615-061

Front foils and sealed membrane keypads

...entire range of foil technology, from rear printed decorative foils and front foils for short or long lift sensors up to keyboard foils.

EMC shielding (also of display areas), coloured filters and embossing sensors belong to our large range of varieties as well as integrated LED's.

Please contact us!

