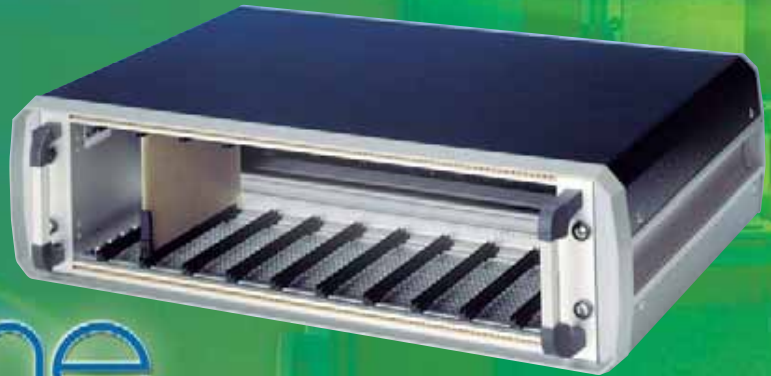




The universal enclosure system for use as 19" enclosure and as desktop enclosure

apra line



Sample configuration



19" enclosure system **apra line**

- ergonomic recessed grip
- easy-to-maintain and cost-saving design principle: all facing panels can be easily removed from the assembled enclosure
- optimum heat dissipation through ventilated bottom and rear panels
- earthing kit for VDE (German Electrical Engineering Association)-compliant earth connection in accordance with VDE 0100/05.73, DIN EN 60204 Part 1 and DIN 46008
- Installation dimensions acc. IEC 297-1

apraLine has a future-oriented design and optimum functionality. Its elegant lines set it apart from the usual rectangular shaped enclosures.

The apraline product family is completed by a desktop enclosure with the same design (see the section on desktop enclosures on page 52).



Specifications



Sample configuration with plug-in unit



Sample configuration with subrack

Application:

19" plug-in units, shelves and 19" subracks can be installed in the enclosure.

Construction:

The identical front and rear frames with a variable width consist of two lateral plastic pieces, which are connected with aluminium extrusions. These frames are connected by solid extrusions and screwed on to the mounting rails. Ergonomic recessed handles and grooves for using mounting nuts are integrated into the extrusions.

Finish:

Cover panels:
RAL 7035 light grey
Frame and side sections:
RAL 7001 silver grey

Protection system:

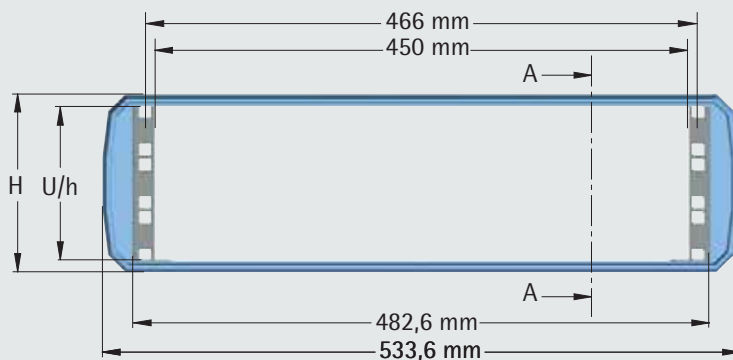
IP 30: solid
IP 20: ventilated

Standards:

Installation dimensions acc. IEC 297-1

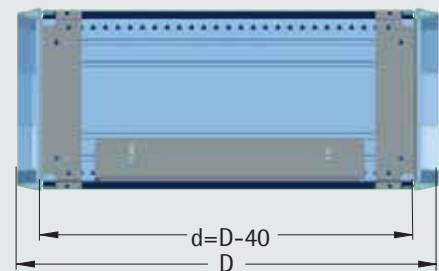
Delivery:

assembled



Front view

H = Enclosure height
U / h = Installation height



Cross section A-A

D=Enclosure depth
d=Installation depth



Included in delivery

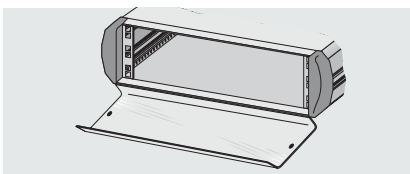
Item	Pc.	Description
1	2	Frames front and rear
2	4	Vertical mountings
3	2	Side panels
4	1	Top panel
5	1	Bottom panel (ventilated/solid)
6	1	Rear panel (ventilated/solid)
7	2	Sliding rails (beginning at 3 U)
8		Assembly material

Order information

Installation height U	Enclosure height h mm	Enclosure height H mm	19" enclosure solid				
			d=222 mm D=262 mm	d=262 mm D=302 mm	d=302 mm D=342 mm	d=342 mm D=382 mm	d=442 mm D=482 mm
2	88	105	140-201	140-211	-	-	-
3	132,5	150	140-301	140-311	140-321	140-331	140-341
4	177	194	140-401	140-411	140-421	140-431	140-441
6	266	283	140-601	140-611	140-621	140-631	140-641
7	310,5	328	-	-	140-721	140-731	140-741
8	354,5	372	140-801	140-811	140-821	140-831	140-841
9	399	416,5	140-901	140-911	140-921	140-931	140-941
19" enclosure ventilated in rear and bottom panel							
2	88	105	140-251	140-261	-	-	-
3	132,5	150	140-351	140-361	140-371	140-381	140-391
4	177	194	140-451	140-461	140-471	140-481	140-491
6	266	283	140-651	140-661	140-671	140-681	140-691
7	310,5	328	-	-	140-771	140-781	140-791
8	354,5	372	140-851	140-861	140-871	140-881	140-891
9	399	416,5	140-951	140-961	140-971	140-981	140-991

Accessories

Plexiglass front door, hinged

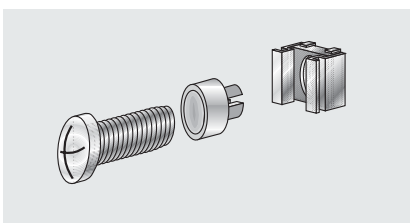


- with 2 quick-release locks (plastic sash fastener)

Delivery: mounted to the enclosure

For installation height U	Part no.
3	140-300
4	140-400
6	140-600

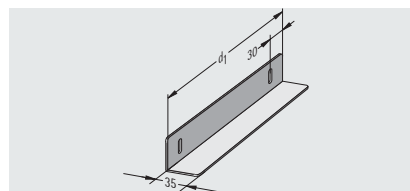
Screw set M 5 (50-fold)



- 50 screws, M5 x 12
- 50 captive nuts, M5-8
- 50 decorative washers, M5 with collar

Part no. (set)
630-991

Sliding rails



Note: for 8 U-high enclosures: please specify order no. followed by -01 when ordering (for example, 14-0020-01)

Description	Install. depth d ₁ mm	Part no. (piece)
for D=262 mm	140	140-020
for D=302 mm	140	140-020
for D=342 mm	220	140-022
for D=382 mm	220	140-022
for D=482 mm	360	140-024

Earthing kit

- for earthing of all enclosure parts in compliance with VDE

For installation height U	Part no. (set)
2	140-032
3	140-033
4	140-034
6	140-036
7	140-037
8	140-038
9	140-039

Prop-up and carrying handle

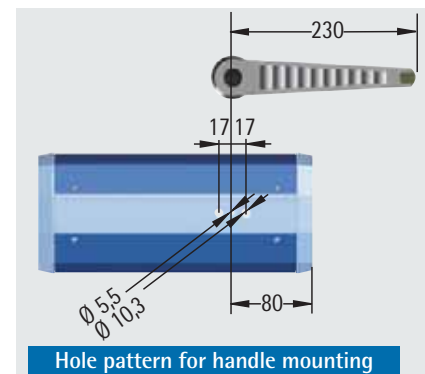


- handle can be set in 30° steps by pressing a button to snap it into place

Load capacity: 50 kg

Finish: Handle: RAL 9011 graphite black
Handle profile: anodised

Delivery: mounted to the enclosure



Part no.
14-0100-84